

# Enhanced Standard Precautions Train-the-Trainer Workshop for Skilled Nursing Facility Educators

May 2023

---

---

Healthcare-Associated Infections Program  
Center for Health Care Quality  
California Department of Public Health



## Housekeeping Reminders



**This session is being recorded.**



**If your name does not show up, please “right click” to rename.**



**Please stay muted if you are not speaking.**



**Type questions or comments in the chat or unmute during discussion.**



**CEU are available for this workshop.**

## Implicit Bias

- Describes how our unconscious attitudes or judgements can influence our thoughts, decisions, or actions
- Includes involuntary, unintentional perceptions made without awareness
- Occurs as our brains sort information and perceive data to understand our world
- Affects our decisions, contributing to societal disparities
  - Self awareness about implicit bias can promote healthcare diversity and equality
- Learn more about your own implicit bias at [Project Implicit](https://implicit.harvard.edu/implicit/) (implicit.harvard.edu/implicit/)



## Meet Your Instructors



**Barbara Allen, MPH, CIC**  
Infection Preventionist  
Rapid Response North Bay Area Lead  
HAI Program, CDPH



**Sheila Segura, RN, BSN, PHN, CIC**  
Infection Preventionist  
IP Performance Coordinator  
HAI Program, CDPH

## Train-the-Trainer Workshops

- Workshops for skilled nursing facility staff responsible for training frontline healthcare personnel
- Trainers (e.g., facility or corporate IP, DSD, DON) need to:
  - Understand Enhanced Standard Precautions (ESP) concepts
  - Assess and reassess staff ESP training needs
  - Be familiar with available ESP training materials and tools

## Objectives

- List ESP principles to reduce multidrug-resistant organism (MDRO) transmission
- Discuss methods to assess and reassess staff ESP training needs
- Navigate the CDPH HAI Program ESP toolkit
- Provide ESP training to frontline staff
- Review processes for sustaining ESP knowledge and infection prevention practices among staff

## Poll Question #1

*At what stage of preparation are you in for implementing Enhanced Standard Precautions in your facility?*

*Select all that apply.*

- A. Considering** ESP implementation
- B. Assessing** facility readiness for implementation and evaluating resource availability
- C. Educating** stakeholders (including nursing, EVS staff, and others)
- D. Implementing** ESP practices; using ESP tools and processes
- E. Reassessing** with ESP adherence monitoring, reassessing satisfaction and processes
- F. We do not plan to use** ESP

## Poll Question #2

*What are your barriers to implementing training for Enhanced Standard Precautions in your facility? Select all that apply.*

- A. Not sure where to start
- B. Lack of leadership support for ESP training
- C. Not sure what training materials to use
- D. Time constraints or staff availability
- E. Not feeling confident with level of ESP knowledge
- F. Other, specify/share in the chat



## Reflect on Your Stakeholders for Enhanced Standard Precautions (ESP) Education

---

---

- Residents, family, visitors, healthcare providers, leadership, medical staff, managers (nursing, environmental services (EVS), materials management, dietary), occupational health, director of staff development (DSD), contractors, others
  - How will each group of stakeholders participate in the ESP process?
- 
-

---

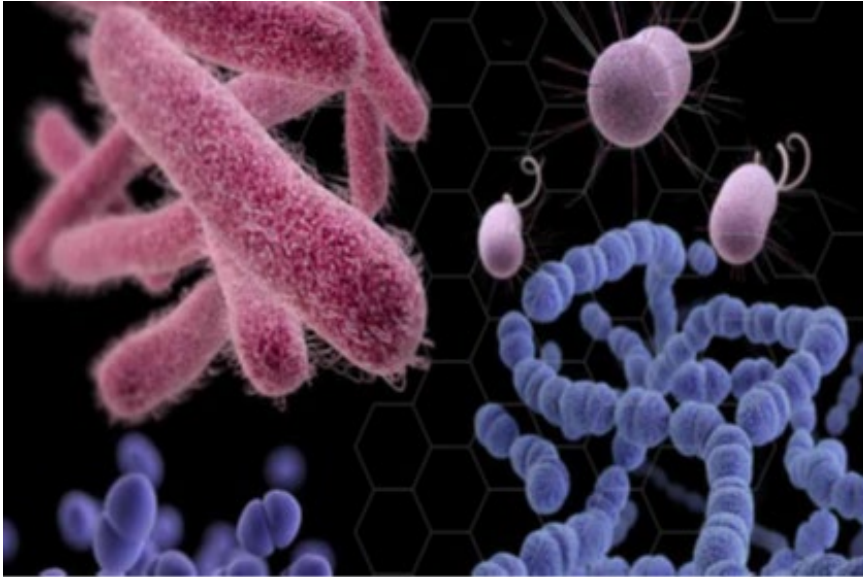
---

## ESP PRINCIPLES TO REDUCE GERM SPREAD

---

---

## Enhanced Standard Precautions (ESP) is a Shift from Germ-Centered Care...



**...to Resident-Centered Care.**

## Enhanced Standard Precautions (ESP)

- A **resident-centered, risk factor-based approach** to prevent spread of germs in skilled nursing facilities
- Involves use of gloves and gowns for high-contact care activities based upon the risk
- Allows residents with adequate hygiene and containment of body fluids to leave their room and participate in group activities



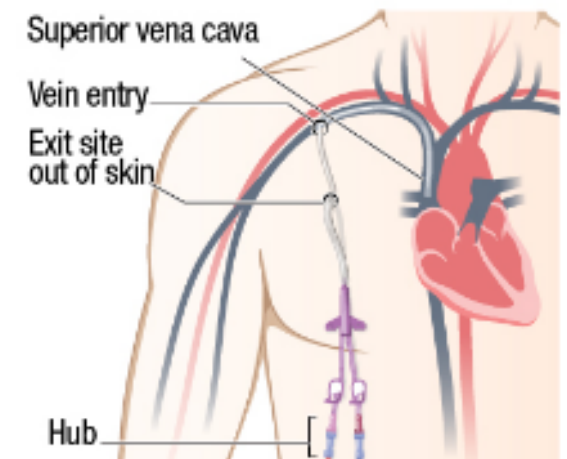
## ESP Improves Outcomes

- Increases resident interaction with others
- Improves resident mental well-being
- Improves resident and family satisfaction
- Reduces healthcare provider PPE fatigue
- Reduces the risk of spreading germs in the facility



## Who Needs ESP?

- Residents who have:
  - Indwelling medical devices (e.g., urinary catheters, feeding tubes, endotracheal or tracheostomy tubes, vascular catheters)
  - Wounds or presence of pressure ulcers (unhealed)
- Nursing should re-assess risk factors periodically (e.g., daily, when there is a change in resident condition)



## There are 6 Moments of ESP

- Use hand hygiene, gowns, and gloves during each of the 6 moments
- Perform hand hygiene and don PPE within room before engaging in activity
- Remove PPE and perform hand hygiene inside room when activity is complete

**Note:** Staff may need to change gloves and perform hand hygiene when moving from a dirty to a clean task for an *individual* resident



## The 6 Moments of ESP

1. Morning & evening care
2. Toileting & changing incontinence briefs
3. Caring for devices & giving medical treatments
4. Wound care
5. Mobility assistance & preparing to leave room
6. Cleaning and disinfecting the environment





## Moment 1: Morning and Evening Care

- Use hand hygiene, gowns, and gloves **during morning and evening care**
  - Dressing
  - Grooming
  - Bathing
  - Oral care, brushing teeth
  - Changing bed linens



## Moment 1: Knowledge Check

Why do you think providing morning and evening care is considered a high-contact activity?

- A. I am coming in contact with the resident or the environment
- B. My clothing can be a source for spreading germs
- C. I can contaminate other surfaces
- D. All of the above



## Moment 1: Knowledge Check

Why do you think providing morning and evening care is considered a high-contact activity?

- A. I am coming in contact with the resident or the environment
- B. My clothing can be a source for spreading germs
- C. I can contaminate other surfaces
- D. **All of the above**



## Moment 1: Additional Bathing Practices

- Gather all supplies needed including PPE before bathing the resident in the shower room
- Ensure all bathing equipment is clean and disinfected between each use
- DO NOT wear gowns and gloves in the hallway



## Moment 2: Toileting and Changing Incontinence Briefs, Perineal Care

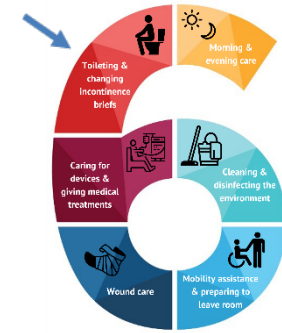
- Use hand hygiene, gowns, and gloves **during toileting, changing incontinence briefs, and performing perineal care**
  - When moving from dirty to clean areas, remove gloves, perform hand hygiene, and don clean gloves between tasks



## Moment 2: Knowledge Check

You just changed a resident's briefs. What should you do before getting them dressed in their clean clothes?

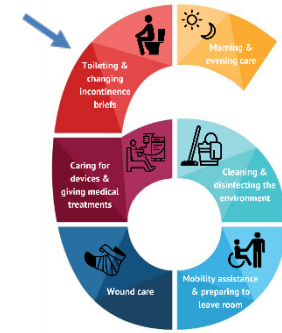
- A. Remove gloves
- B. Perform hand hygiene
- C. Put on a clean pair of gloves
- D. All of the above
- E. None of the above



## Moment 2: Knowledge Check

You just changed a resident's briefs. What should you do before getting them dressed in their clean clothes?

- A. Remove gloves
- B. Perform hand hygiene
- C. Put on a clean pair of gloves
- D. **All of the above**
- E. None of the above



## Moment 3: Caring for Devices & Giving Medical Treatments

Use hand hygiene, gowns, and gloves during:

- **Care of indwelling devices** such as
  - Urinary catheters
  - Intravascular catheters
  - Endotracheal/tracheostomy tubes
  - Feeding tubes
- **Medical treatments** that require close contact with a high-risk resident and their environment such as respiratory treatments or administering tube feedings





## Moment 3: Knowledge Check

You just emptied the Foley bag and the resident needs your help to take medication. What is your next step?

- A. No need to do anything
- B. Remove gloves and put on a clean pair of gloves
- C. Remove gloves, perform hand hygiene, and put on a clean pair of gloves
- D. Ask your co-worker to help



## Moment 3: Knowledge Check

You just emptied the Foley bag and the resident needs your help to take medication. What is your next step?

- A. No need to do anything
- B. Remove gloves and put on a clean pair of gloves
- C. **Remove gloves, perform hand hygiene, and put on a clean pair of gloves**
- D. Ask your co-worker to help



## Moment 4: Wound Care

- Use hand hygiene, gowns, and gloves **during wound care and dressing changes**



## Moment 4: Knowledge Check

You received a new admit with draining wounds which can not be contained.  
What precautions do you need to follow?

- A. Standard Precautions
- B. Enhanced Standard Precautions
- C. Contact Precautions
- D. No precautions



## Moment 4: Knowledge Check

You received a new admit with draining wounds which can not be contained.  
What precautions do you need to follow?

- A. Standard Precautions
- B. Enhanced Standard Precautions
- C. **Contact Precautions**
- D. No precautions



## Moment 5: Mobility Assistance and Preparing to Leave Room

- Use hand hygiene, gowns, and gloves **when assisting with mobility and when preparing a resident to leave the room**
- Do not wear gowns and gloves outside of the room



## Moment 5: Knowledge Check

Do you need to wear PPE when interacting with the resident in the activity room?

- A. Yes
- B. No



## Moment 5: Knowledge Check

Do you need to wear PPE when interacting with the resident in the activity room?

- A. Yes
- B. **No**





## Moment 6: Cleaning and Disinfecting the Environment

- Perform hand hygiene and don gown and gloves **when cleaning the resident room**
- For multi-bed rooms:
  - Treat each bedspace as separate room
  - EVS staff should routinely change gown and gloves between cleaning bed spaces



## Moment 6: Knowledge Check

You are performing a terminal clean of a bedspace of a resident on ESP in a multi-bed room. Do you need to change gowns and gloves between the bed spaces?

- A. Yes
- B. No



## Moment 6: Knowledge Check

You are performing a terminal clean of a bedspace of a resident on ESP in a multi-bed room. Do you need to change gowns and gloves between the bed spaces?

- A. **Yes**
- B. No



## 6 Moments for ESP: Additional Discussion

- Is the resident environment considered dirty?
- How can your clothing be the source for spreading germs?
- How can you prevent spreading germs to other residents after performing high-contact activities?
- How can you prevent spreading germs to the nursing station and other areas?



## Summary

- Certain residents have risk factors that increase the chance of picking up or spreading germs to others
- Performing good hand hygiene and using PPE during the 6 moments of ESP will help prevent germ spread among our residents
- Successful implementation of ESP helps improve resident and family satisfaction and outcomes



# ESP TOOLKIT & TRAINING IMPLEMENTATION STRATEGIES



## ESP Toolkit

› Enhanced Standard Precautions for Skilled Nursing Facilities (SNF), 2022 Document

▼ › Enhanced Standard Precautions for Skilled Nursing Facilities, Webinar Series, Module One



**Enhanced Standard Precautions for Skilled Nursing Facilities (PDF) Module One** is an introduction to ESP. It provides a background on why CDPH updated ESP for SNFs in 2022, defines the “who, what, when, where, and how” of ESP in SNFs and describes the 6 moments of ESP. It highlights the tools for ESP and their importance in successful implementation.  
[ESP Introductory Video Message from Dr. Erin Epton \(Opens in YouTube\)](#)

› Enhanced Standard Precautions for Skilled Nursing Facilities: Implementation, Webinar Series, Module Two

› ESP Readiness Checklist for SNF and Acute Care Hospitals with Distinct Part SNFs

› › Enhanced Standard Precautions Templates for Infection Prevention Plan and Risk Assessment

› Six Moments of Enhanced Standard Precautions Sign

› Six Moments for Enhanced Standard Precautions Pamphlet

› Infection Prevention and Control Training: Hand Hygiene, Environmental Cleaning and Disinfection, Personal Protective Equipment, and ESP

› Adherence Monitoring Tools

› Interfacility Transfer Communications

› Frequently Asked Questions (FAQ)

› ESP Resource Guide

### [ESP Toolkit](https://www.cdph.ca.gov/Programs/CHCQ/HAI/Pages/ESP.aspx)

(<https://www.cdph.ca.gov/Programs/CHCQ/HAI/Pages/ESP.aspx>)

## ESP Toolkit: ESP Sign



[https://www.cdph.ca.gov/Programs/CHCQ/HAI/CDPH%20Document%20Library/ESP\\_6\\_MomentsSignage.pdf](https://www.cdph.ca.gov/Programs/CHCQ/HAI/CDPH%20Document%20Library/ESP_6_MomentsSignage.pdf)





## Enhanced Standard Precautions



**EVERYONE MUST:** Perform hand hygiene before entering the room



**ANYONE PARTICIPATING IN ANY OF THESE SIX MOMENTS MUST ALSO:** Don gown and gloves

Precautions



Hand hygiene

ANY OF THESE SIX  
on gown and gloves

&  
care

ing &  
cting the  
nment



Wound care

Mobility assistance  
& preparing to  
leave room

Change and discard gown and gloves, and perform hand hygiene between each resident and before leaving room.

[The Six Moments of Enhanced Standard Precautions Sign](https://www.cdph.ca.gov/Programs/CHCQ/HAI/CDPH%20Documents/ESP_6_MomentsSignage.pdf)

([https://www.cdph.ca.gov/Programs/CHCQ/HAI/CDPH%20Documents/ESP\\_6\\_MomentsSignage.pdf](https://www.cdph.ca.gov/Programs/CHCQ/HAI/CDPH%20Documents/ESP_6_MomentsSignage.pdf))



## Enhanced Standard Precautions



**EVERYONE MUST:** Perform hand hygiene before entering the room

**IN ANY OF THESE SIX**  
Don gown and gloves

Change and discard gown and gloves, and perform hand hygiene between each resident and before leaving room.



Change and discard gown and gloves, and perform hand hygiene between each resident and before leaving room.

[The Six Moments of Enhanced Standard Precautions Sign](https://www.cdph.ca.gov/Programs/CHCQ/HAI/CDPH%20Documents/Library/ESP_6_MomentsSignage.pdf)

([https://www.cdph.ca.gov/Programs/CHCQ/HAI/CDPH%20Documents/Library/ESP\\_6\\_MomentsSignage.pdf](https://www.cdph.ca.gov/Programs/CHCQ/HAI/CDPH%20Documents/Library/ESP_6_MomentsSignage.pdf))

## ESP Toolkit: ESP Sign

- Educate staff to place sign (or look for sign) in a standard location (e.g., at the door, above head of bed) per policy to indicate the need for ESP and PPE during a resident's care

### [The Six Moments of Enhanced Standard Precautions Sign](https://www.cdph.ca.gov/Programs/CHCQ/HAI/CDPH%20Documents/ESP_6_MomentsSignage.pdf)

([https://www.cdph.ca.gov/Programs/CHCQ/HAI/CDPH%20Documents/ESP\\_6\\_MomentsSignage.pdf](https://www.cdph.ca.gov/Programs/CHCQ/HAI/CDPH%20Documents/ESP_6_MomentsSignage.pdf))



# ESP Toolkit: ESP Pamphlet

## Enhanced Standard Precautions in Skilled Nursing Facilities Information for Residents and Families



Our staff want to keep all of our residents safe. **We use Enhanced Standard precautions to prevent spread of antibiotic resistant germs.** These precautions allow most residents to leave their rooms and take part in activities with others in common areas. Enhanced Standard precautions are not as restrictive as Contact precautions used in hospitals for isolating patients with resistant germs.

This brochure explains Enhanced Standard precautions and how they are used in our facility.

[The Six Moments of Enhanced Standard Precautions ESP Pamphlet](https://www.cdph.ca.gov/Programs/CHCQ/HAI/CDPH%20Document%20Library/EnhancedStandardPrecautionsTrifold.pdf)

(<https://www.cdph.ca.gov/Programs/CHCQ/HAI/CDPH%20Document%20Library/EnhancedStandardPrecautionsTrifold.pdf>)

## WHAT are Enhanced Standard Precautions? This is what our staff does:

### • Wash hands, and wear gloves and gown, when helping a resident

- Wash your hands with soap and water, or clean with hand gel, before you go into the room.



- Wear gloves and gowns when providing care very close to the resident. Examples are pictured in the Six Moments for ESP sign (on back). After washing hands, put on the gown, then gloves, before giving care. Take them off and throw them away in the room when you are done; then clean your hands.



### • Room cleaning

Housekeepers will help keep the room clean. They will clean areas that are touched many times. These are called 'high-touch surfaces.' You can help keep the room tidy. Housekeepers can work better to keep the room clean if there are fewer items to work around.



## WHO needs Enhanced Standard Precautions?

Some residents have germs that can be spread to other residents. This can make them very sick. We make that less likely to happen by using Enhanced Standard Precautions.

### Enhanced Standard Precautions are used if the resident has special devices:

- A tube that goes into the throat for breathing (trach)
- A special tube that goes into blood (central line)
- A central line for cleaning the blood (dialysis)
- A tube that drains away urine (urinary catheter)
- Tubes that go into the stomach (feeding tube)
- Wounds or sores that aren't healed



## WHEN do our staff use Enhanced Standard Precautions?

There are six times when Enhanced Standard Precautions should be used. These moments usually take place in the resident's room or bathroom.



### 1. Morning & evening care



### 2. Helping them go to the toilet & changing briefs



### 3. Caring for special devices & giving medical treatments



### 4. Caring for wounds



### 5. Getting the resident out of bed & getting them ready to leave the room



### 6. Cleaning the room & other areas

## HOW can you help?

Visitors and family members are key in helping residents understand the importance of personal hygiene and Enhanced Standard precautions.



### We ask visitors to:

- Perform hand hygiene frequently, and always when entering the resident's room and when leaving the room. Waterless, alcohol-based hand sanitizer is highly effective in killing germs when hands are not visibly soiled.
- Use gowns and gloves after hand hygiene when assisting staff members with providing care, or if having contact with blood, body fluids, or skin that has breakdown areas.
- Follow any other precautions listed on the door sign if a resident is on Contact or Droplet precautions.



# ESP Toolkit: ESP Pamphlet

## The Six Moments for Enhanced Standard Precautions

You will see this sign on a resident door when Enhanced Standard precautions is required.



For more information visit  
[www.cdph.ca.gov/hai](http://www.cdph.ca.gov/hai)


[The Six Moments of Enhanced  
Standard Precautions ESP  
Pamphlet](https://www.cdph.ca.gov/Programs/CHCQ/HAI/CDPH%20Document%20Library/EnhancedStandardPrecautionsTrifold.pdf)

(<https://www.cdph.ca.gov/Programs/CHCQ/HAI/CDPH%20Document%20Library/EnhancedStandardPrecautionsTrifold.pdf>)

## ESP Toolkit: ESP Pamphlet

- Train staff to use pamphlet for resident and visitor education
- Examples: Add to admission packets, place in visitation areas and nurses' station

**HOW can you help?**  
Visitors and family members are key in helping residents understand the importance of personal hygiene and Enhanced Standard precautions.





**We ask visitors to:**

- Perform hand hygiene frequently, and always when entering the resident's room and when leaving the room. Waterless, alcohol-based hand sanitizer is highly effective in killing germs when hands are not visibly soiled.
- Use gowns and gloves after hand hygiene when assisting staff members with providing care, or if having contact with blood, body fluids, or skin that has breakdown areas.
- Follow any other precautions listed on the door sign if a resident is on Contact or Droplet precautions.

**The Six Moments for Enhanced Standard Precautions**

You will see this sign on a resident door when Enhanced Standard precautions is required.


For more information visit [www.cdph.ca.gov/hai](http://www.cdph.ca.gov/hai)

**Enhanced Standard Precautions in Skilled Nursing Facilities**  
Information for Residents and Families



Our staff want to keep all of our residents safe. We use Enhanced Standard precautions to prevent spread of antibiotic resistant germs. These precautions allow most residents to leave their rooms and take part in activities with others in common areas. Enhanced Standard precautions are not as restrictive as Contact precautions used in hospitals for isolating patients with resistant germs.

This brochure explains Enhanced Standard precautions and how they are used in our facility.



### [The Six Moments of Enhanced Standard Precautions ESP Pamphlet](https://www.cdph.ca.gov/Programs/CHCQ/HAI/CDPH%20Document%20Library/EnhancedStandardPrecautionsTrifold.pdf)

(<https://www.cdph.ca.gov/Programs/CHCQ/HAI/CDPH%20Document%20Library/EnhancedStandardPrecautionsTrifold.pdf>)

## Addressing Barriers to ESP Training

- A. Not sure where to start
- B. Lack of leadership support for ESP training
- C. Not sure what training materials to use
- D. Time constraints or staff availability
- E. Not feeling confident with level of ESP knowledge
- F. Other, specify/share in the chat



## Not Sure Where to Start

- This workshop!
- Enlist other leaders
- Start small
  - Transition Contact Precautions residents to ESP
  - Start on one unit; then roll out facility-wide
  - Train one group of frontline staff; then expand to other groups
- Know your audience (e.g., current level of understanding)

## Lack of Leadership Support for Training

- Identify leadership's barriers (e.g., financial)
- Give them an opportunity to be part of the training (e.g., invite them to be trainer, designate an ESP Champion)

## Not Sure What Training Materials to Use

- Consider the trainings shared today
- Review current resources in the ESP Toolkit:

<https://www.cdph.ca.gov/Programs/CHCQ/HAI/Pages/ESP.aspx>



## Time Constraints or Staff Availability

- Divide the training into different sections (e.g., review 1 moment per day)
- Use select slides to train specific staff
- Train during daily huddle
- Train as part of new hire/annual orientation
- Train anywhere (e.g., nursing station, classroom)

## Not Feeling Confident with Level of ESP Knowledge

- Review CDPH HAI Program ESP Toolkit  
(<https://www.cdph.ca.gov/Programs/CHCQ/HAI/Pages/ESP.aspx>)
  - Review “CDPH Enhanced Standard Precautions for Skilled Nursing Facilities (SNF), 2022”
  - Review “ESP Introduction” and “ESP Implementation” modules
- Work with your corporate IP
- Attend ESP Train-the-Trainer Office Hours – Friday, May 26, 2023, 11-12PM

## What is the Best Way to Provide Training to *Your* Staff?

- ✓ Develop a training plan
- ✓ Consider stakeholder perspectives and learning needs
- ✓ Provide training
- ✓ Assess competency
- ✓ Conduct adherence monitoring (to assess retraining needs)




# SUSTAINING ESP KNOWLEDGE AND PRACTICE



# Use Adherence Monitoring Tools to Measure Adherence to Each ESP Practice

- Performance is scored as percent adherence
- Identify gaps in processes or training



Healthcare-Associated Infections Program Adherence Monitoring  
Enhanced Standard Precautions (ESP)

Assessment completed by: \_\_\_\_\_  
Date: \_\_\_\_\_  
Unit: \_\_\_\_\_

Regular monitoring with feedback of results to staff can maintain or improve adherence to ESP practices. Use this tool to identify gaps and opportunities for improvement. Monitoring may be performed in any type of resident care location where residents are on ESP. Refer to the grid at the back of this tool to determine if ESP is indicated for the resident.

**Instructions:** Observe 3-4 residents on ESP. Observe each practice and check a box if adherent, Yes or No. In the column on the right, record the total number of "Yes" for adherent practices observed and the total number of observations ("Yes" + "No"). Calculate adherence percentage in the last row.

Enhanced Standard Precautions Practices	ESP Resident 1		ESP Resident 2		ESP Resident 3		ESP Resident 4		Adherence by Task	
	Yes	No	Yes	No	Yes	No	Yes	No	# Yes	# Observed
ESP1. PPE including gloves and gowns are available and located near point of use.	<input type="checkbox"/>	<input type="checkbox"/>	<input type="checkbox"/>	<input type="checkbox"/>	<input type="checkbox"/>	<input type="checkbox"/>	<input type="checkbox"/>	<input type="checkbox"/>		
ESP2. 6 Moment/ESP sign is clear and visible. Sample signage is available at <a href="https://www.cdph.ca.gov/Programs/CHIQ/HAI/Pages/ESP.aspx">CDPH website</a> : ( <a href="https://www.cdph.ca.gov/Programs/CHIQ/HAI/Pages/ESP.aspx">https://www.cdph.ca.gov/Programs/CHIQ/HAI/Pages/ESP.aspx</a> )	<input type="checkbox"/>	<input type="checkbox"/>	<input type="checkbox"/>	<input type="checkbox"/>	<input type="checkbox"/>	<input type="checkbox"/>	<input type="checkbox"/>	<input type="checkbox"/>		
ESP3. If a private room is not available, resident is <u>cohabited</u> with a compatible roommate (such as a resident with the same MDRO or resistance mechanism, if present and known).	<input type="checkbox"/>	<input type="checkbox"/>	<input type="checkbox"/>	<input type="checkbox"/>	<input type="checkbox"/>	<input type="checkbox"/>	<input type="checkbox"/>	<input type="checkbox"/>		
ESP4. If multi-bed room, each resident's bed space is treated as a separate room (e.g., care provider performs hand hygiene and changes PPE between caring for each resident in the room).	<input type="checkbox"/>	<input type="checkbox"/>	<input type="checkbox"/>	<input type="checkbox"/>	<input type="checkbox"/>	<input type="checkbox"/>	<input type="checkbox"/>	<input type="checkbox"/>		
ESP5. Hand hygiene is performed before entering the resident care environment.	<input type="checkbox"/>	<input type="checkbox"/>	<input type="checkbox"/>	<input type="checkbox"/>	<input type="checkbox"/>	<input type="checkbox"/>	<input type="checkbox"/>	<input type="checkbox"/>		
ESP6. Gloves, <u>gowns</u> , and other necessary PPE are donned before performing high-contact tasks (6 moments).	<input type="checkbox"/>	<input type="checkbox"/>	<input type="checkbox"/>	<input type="checkbox"/>	<input type="checkbox"/>	<input type="checkbox"/>	<input type="checkbox"/>	<input type="checkbox"/>		
ESP7. Hand hygiene is performed after PPE is removed, before leaving the resident care environment.	<input type="checkbox"/>	<input type="checkbox"/>	<input type="checkbox"/>	<input type="checkbox"/>	<input type="checkbox"/>	<input type="checkbox"/>	<input type="checkbox"/>	<input type="checkbox"/>		
ESP8. Dedicated or disposable noncritical patient-care equipment (e.g., blood pressure cuffs) is used; if dedicated/disposable equipment is unavailable, then equipment is cleaned and disinfected prior to use on another resident according to manufacturers' instructions.	<input type="checkbox"/>	<input type="checkbox"/>	<input type="checkbox"/>	<input type="checkbox"/>	<input type="checkbox"/>	<input type="checkbox"/>	<input type="checkbox"/>	<input type="checkbox"/>		
<b># of Correct Practices Observed ("# Yes"):</b> _____		<b>Total # ESP Observations ("# Observed"):</b> _____ (Up to 32 total)				<b>Adherence:</b> _____% (Total "# Yes" ÷ Total "# Observed" x 100)				

If practice could not be observed (i.e., cell is blank), do not count in total # Observed





## Healthcare-Associated Infections Program Adherence Monitoring Enhanced Standard Precautions (ESP)

Assessment completed by:  
Date:  
Unit:

Regular monitoring with feedback of results to staff can maintain or improve adherence to ESP practices. Use this tool to identify gaps and opportunities for improvement. Monitoring may be performed in any type of resident care location where residents are on ESP. Refer to the grid at the back of this tool to determine if ESP is indicated for the resident.

**Instructions:** Observe 3-4 residents on ESP. Observe each practice and check a box if adherent, Yes or No. In the column on the right, record the total number of "Yes" for adherent practices observed and the total number of observations ("Yes" + "No"). Calculate adherence percentage in the last row.

Enhanced Standard Precautions Practices		ESP Resident 1		ESP Resident 2		ESP Resident 3		ESP Resident 4		Adherence by Task	
		<input type="checkbox"/> Yes	<input type="checkbox"/> No	<input type="checkbox"/> Yes	<input type="checkbox"/> No	<input type="checkbox"/> Yes	<input type="checkbox"/> No	<input type="checkbox"/> Yes	<input type="checkbox"/> No	# Yes	# Observed
ESP1.	PPE including gloves and gowns are available and located near point of use.	<input type="checkbox"/> Yes	<input type="checkbox"/> No	<input type="checkbox"/> Yes	<input type="checkbox"/> No	<input type="checkbox"/> Yes	<input type="checkbox"/> No	<input type="checkbox"/> Yes	<input type="checkbox"/> No		
ESP2.	6 Moment/ESP sign is clear and visible. Sample signage is available at <a href="https://www.cdph.ca.gov/Programs/CHCQ/HAI/Pages/ESP.aspx">CDPH website</a> : ( <a href="https://www.cdph.ca.gov/Programs/CHCQ/HAI/Pages/ESP.aspx">https://www.cdph.ca.gov/Programs/CHCQ/HAI/Pages/ESP.aspx</a> )	<input type="checkbox"/> Yes	<input type="checkbox"/> No	<input type="checkbox"/> Yes	<input type="checkbox"/> No	<input type="checkbox"/> Yes	<input type="checkbox"/> No	<input type="checkbox"/> Yes	<input type="checkbox"/> No		
ESP3.	If a private room is not available, resident is <u>cohorted</u> with a compatible roommate (such as a resident with the same MDRO or resistance mechanism, if present and known).	<input type="checkbox"/> Yes	<input type="checkbox"/> No	<input type="checkbox"/> Yes	<input type="checkbox"/> No	<input type="checkbox"/> Yes	<input type="checkbox"/> No	<input type="checkbox"/> Yes	<input type="checkbox"/> No		
ESP4.	If multi-bed room, each resident's bed space is treated as a separate room (e.g., care provider performs hand hygiene and changes PPE between caring for each resident in the room).	<input type="checkbox"/> Yes	<input type="checkbox"/> No	<input type="checkbox"/> Yes	<input type="checkbox"/> No	<input type="checkbox"/> Yes	<input type="checkbox"/> No	<input type="checkbox"/> Yes	<input type="checkbox"/> No		
ESP5.	Hand hygiene is performed before entering the resident care environment.	<input type="checkbox"/> Yes	<input type="checkbox"/> No	<input type="checkbox"/> Yes	<input type="checkbox"/> No	<input type="checkbox"/> Yes	<input type="checkbox"/> No	<input type="checkbox"/> Yes	<input type="checkbox"/> No		
ESP6.	Gloves, <u>gown</u> and other necessary PPE are donned before performing high-contact tasks (6 moments).	<input type="checkbox"/> Yes	<input type="checkbox"/> No	<input type="checkbox"/> Yes	<input type="checkbox"/> No	<input type="checkbox"/> Yes	<input type="checkbox"/> No	<input type="checkbox"/> Yes	<input type="checkbox"/> No		
ESP7.	Hand hygiene is performed after PPE is removed, before leaving the resident care environment.	<input type="checkbox"/> Yes	<input type="checkbox"/> No	<input type="checkbox"/> Yes	<input type="checkbox"/> No	<input type="checkbox"/> Yes	<input type="checkbox"/> No	<input type="checkbox"/> Yes	<input type="checkbox"/> No		
ESP8.	Dedicated or disposable noncritical patient-care equipment (e.g., blood pressure cuffs) is used; if dedicated/disposable equipment is unavailable, then equipment is cleaned and disinfected prior to use on another resident according to manufacturers' instructions.	<input type="checkbox"/> Yes	<input type="checkbox"/> No	<input type="checkbox"/> Yes	<input type="checkbox"/> No	<input type="checkbox"/> Yes	<input type="checkbox"/> No	<input type="checkbox"/> Yes	<input type="checkbox"/> No		

# of Correct Practices Observed ("# Yes"):

\_\_\_\_\_

Total # ESP Observations ("# Observed"): \_\_\_\_\_

(Up to 32 total)

*If practice could not be observed (i.e. cell is blank), do not count in total # Observed.*

Adherence: \_\_\_\_\_%

(Total "# Yes" ÷ Total "# Observed" x 100)





## Healthcare-Associated Infections Program Adherence Monitoring Enhanced Standard Precautions (ESP)

Assessment completed by:  
Date:  
Unit:

Regular monitoring with feedback of results to staff can maintain or improve adherence to ESP practices. Use this tool to identify gaps and opportunities for improvement. Monitoring may be performed in any type of resident care location where residents are on ESP. Refer to the grid at the back of this tool to determine if ESP is indicated for the resident.

**Instructions:** Observe 3-4 residents on ESP. Observe each practice and check a box if adherent, Yes or No. In the column on the right, record the total number of "Yes" for adherent practices observed and the total number of observations ("Yes" + "No"). Calculate adherence percentage in the last row.

Enhanced Standard Precautions Practices		ESP Resident 1		ESP Resident 2		ESP Resident 3		ESP Resident 4		Adherence by Task	
		<input type="checkbox"/> Yes	<input type="checkbox"/> No	<input type="checkbox"/> Yes	<input type="checkbox"/> No	<input type="checkbox"/> Yes	<input type="checkbox"/> No	<input type="checkbox"/> Yes	<input type="checkbox"/> No	# Yes	# Observed
ESP1.	PPE including gloves and gowns are available and located near point of use.	<input type="checkbox"/> Yes	<input type="checkbox"/> No	<input type="checkbox"/> Yes	<input type="checkbox"/> No	<input type="checkbox"/> Yes	<input type="checkbox"/> No	<input type="checkbox"/> Yes	<input type="checkbox"/> No		
ESP2.	6 Moment/ESP sign is clear and visible. Sample signage is available at <a href="https://www.cdph.ca.gov/Programs/CHCQ/HAI/Pages/ESP.aspx">CDPH website</a> : (https://www.cdph.ca.gov/Programs/CHCQ/HAI/Pages/ESP.aspx)	<input type="checkbox"/> Yes	<input type="checkbox"/> No	<input type="checkbox"/> Yes	<input type="checkbox"/> No	<input type="checkbox"/> Yes	<input type="checkbox"/> No	<input type="checkbox"/> Yes	<input type="checkbox"/> No		
ESP3.	If a private room is not available, resident is <u>cohorted</u> with a compatible roommate (such as a resident with the same MDRO or resistance mechanism, if present and known).	<input type="checkbox"/> Yes	<input type="checkbox"/> No	<input type="checkbox"/> Yes	<input type="checkbox"/> No	<input type="checkbox"/> Yes	<input type="checkbox"/> No	<input type="checkbox"/> Yes	<input type="checkbox"/> No		
ESP4.	If multi-bed room, each resident's bed space is treated as a separate room (e.g., care provider performs hand hygiene and changes PPE between caring for each resident in the room).	<input type="checkbox"/> Yes	<input type="checkbox"/> No	<input type="checkbox"/> Yes	<input type="checkbox"/> No	<input type="checkbox"/> Yes	<input type="checkbox"/> No	<input type="checkbox"/> Yes	<input type="checkbox"/> No		
ESP5.	Hand hygiene is performed before entering the resident care environment.	<input type="checkbox"/> Yes	<input type="checkbox"/> No	<input type="checkbox"/> Yes	<input type="checkbox"/> No	<input type="checkbox"/> Yes	<input type="checkbox"/> No	<input type="checkbox"/> Yes	<input type="checkbox"/> No		
ESP6.	Gloves, <u>gown</u> and other necessary PPE are donned before performing high-contact tasks (6 moments).	<input type="checkbox"/> Yes	<input type="checkbox"/> No	<input type="checkbox"/> Yes	<input type="checkbox"/> No	<input type="checkbox"/> Yes	<input type="checkbox"/> No	<input type="checkbox"/> Yes	<input type="checkbox"/> No		
ESP7.	Hand hygiene is performed after PPE is removed, before leaving the resident care environment.	<input type="checkbox"/> Yes	<input type="checkbox"/> No	<input type="checkbox"/> Yes	<input type="checkbox"/> No	<input type="checkbox"/> Yes	<input type="checkbox"/> No	<input type="checkbox"/> Yes	<input type="checkbox"/> No		
ESP8.	Dedicated or disposable noncritical patient-care equipment (e.g., blood pressure cuffs) is used; if dedicated/disposable equipment is unavailable, then equipment is cleaned and disinfected prior to use on another resident according to manufacturers' instructions.	<input type="checkbox"/> Yes	<input type="checkbox"/> No	<input type="checkbox"/> Yes	<input type="checkbox"/> No	<input type="checkbox"/> Yes	<input type="checkbox"/> No	<input type="checkbox"/> Yes	<input type="checkbox"/> No		

# of Correct Practices Observed ("# Yes"):  
\_\_\_\_\_

Total # ESP Observations ("# Observed"): \_\_\_\_\_  
(Up to 32 total)

Adherence: \_\_\_\_\_%  
(Total "# Yes" ÷ Total "# Observed" x 100)

*If practice could not be observed (i.e. cell is blank), do not count in total # Observed.*





## Healthcare-Associated Infections Program Adherence Monitoring Enhanced Standard Precautions (ESP)

Assessment completed by:  
Date:  
Unit:

Regular monitoring with feedback of results to staff can maintain or improve adherence to ESP practices. Use this tool to identify gaps and opportunities for improvement. Monitoring may be performed in any type of resident care location where residents are on ESP. Refer to the grid at the back of this tool to determine if ESP is indicated for the resident.

**Instructions:** Observe 3-4 residents on ESP. Observe each practice and check a box if adherent, Yes or No. In the column on the right, record the total number of "Yes" for adherent practices observed and the total number of observations ("Yes" + "No"). Calculate adherence percentage in the last row.

Enhanced Standard Precautions Practices		ESP Resident 1		ESP Resident 2		ESP Resident 3		ESP Resident 4		Adherence by Task	
		<input type="checkbox"/> Yes	<input type="checkbox"/> No	<input type="checkbox"/> Yes	<input type="checkbox"/> No	<input type="checkbox"/> Yes	<input type="checkbox"/> No	<input type="checkbox"/> Yes	<input type="checkbox"/> No	# Yes	# Observed
ESP1.	PPE including gloves and gowns are available and located near point of use.	<input type="checkbox"/> Yes	<input type="checkbox"/> No	<input type="checkbox"/> Yes	<input type="checkbox"/> No	<input type="checkbox"/> Yes	<input type="checkbox"/> No	<input type="checkbox"/> Yes	<input type="checkbox"/> No		
ESP2.	6 Moment/ESP sign is clear and visible. Sample signage is available at <a href="https://www.cdph.ca.gov/Programs/CHCQ/HAI/Pages/ESP.aspx">CDPH website</a> : (https://www.cdph.ca.gov/Programs/CHCQ/HAI/Pages/ESP.aspx)	<input type="checkbox"/> Yes	<input type="checkbox"/> No	<input type="checkbox"/> Yes	<input type="checkbox"/> No	<input type="checkbox"/> Yes	<input type="checkbox"/> No	<input type="checkbox"/> Yes	<input type="checkbox"/> No		
ESP3.	If a private room is not available, resident is <u>cohorted</u> with a compatible roommate (such as a resident with the same MDRO or resistance mechanism, if present and known).	<input type="checkbox"/> Yes	<input type="checkbox"/> No	<input type="checkbox"/> Yes	<input type="checkbox"/> No	<input type="checkbox"/> Yes	<input type="checkbox"/> No	<input type="checkbox"/> Yes	<input type="checkbox"/> No		
ESP4.	If multi-bed room, each resident's bed space is treated as a separate room (e.g., care provider performs hand hygiene and changes PPE between caring for each resident in the room).	<input type="checkbox"/> Yes	<input type="checkbox"/> No	<input type="checkbox"/> Yes	<input type="checkbox"/> No	<input type="checkbox"/> Yes	<input type="checkbox"/> No	<input type="checkbox"/> Yes	<input type="checkbox"/> No		
ESP5.	Hand hygiene is performed before entering the resident care environment.	<input type="checkbox"/> Yes	<input type="checkbox"/> No	<input type="checkbox"/> Yes	<input type="checkbox"/> No	<input type="checkbox"/> Yes	<input type="checkbox"/> No	<input type="checkbox"/> Yes	<input type="checkbox"/> No		
ESP6.	Gloves, <u>gown</u> and other necessary PPE are donned before performing high-contact tasks (6 moments).	<input type="checkbox"/> Yes	<input type="checkbox"/> No	<input type="checkbox"/> Yes	<input type="checkbox"/> No	<input type="checkbox"/> Yes	<input type="checkbox"/> No	<input type="checkbox"/> Yes	<input type="checkbox"/> No		
ESP7.	Hand hygiene is performed after PPE is removed, before leaving the resident care environment.	<input type="checkbox"/> Yes	<input type="checkbox"/> No	<input type="checkbox"/> Yes	<input type="checkbox"/> No	<input type="checkbox"/> Yes	<input type="checkbox"/> No	<input type="checkbox"/> Yes	<input type="checkbox"/> No		
ESP8.	Dedicated or disposable noncritical patient-care equipment (e.g., blood pressure cuffs) is used; if dedicated/disposable equipment is unavailable, then equipment is cleaned and disinfected prior to use on another resident according to manufacturers' instructions.	<input type="checkbox"/> Yes	<input type="checkbox"/> No	<input type="checkbox"/> Yes	<input type="checkbox"/> No	<input type="checkbox"/> Yes	<input type="checkbox"/> No	<input type="checkbox"/> Yes	<input type="checkbox"/> No		

# of Correct Practices Observed ("# Yes"):  
\_\_\_\_\_

Total # ESP Observations ("# Observed"): \_\_\_\_\_  
(Up to 32 total)

Adherence: \_\_\_\_\_%  
(Total "# Yes" ÷ Total "# Observed" x 100)

*If practice could not be observed (i.e. cell is blank), do not count in total # Observed.*





## Healthcare-Associated Infections Program Adherence Monitoring Enhanced Standard Precautions (ESP)

Assessment completed by:  
Date:  
Unit:

Regular monitoring with feedback of results to staff can maintain or improve adherence to ESP practices. Use this tool to identify gaps and opportunities for improvement. Monitoring may be performed in any type of resident care location where residents are on ESP. Refer to the grid at the back of this tool to determine if ESP is indicated for the resident.

**Instructions:** Observe 3-4 residents on ESP. Observe each practice and check a box if adherent, Yes or No. In the column on the right, record the total number of "Yes" for adherent practices observed and the total number of observations ("Yes" + "No"). Calculate adherence percentage in the last row.

Enhanced Standard Precautions Practices		ESP Resident 1		ESP Resident 2		ESP Resident 3		ESP Resident 4		Adherence by Task	
		<input type="checkbox"/> Yes	<input type="checkbox"/> No	<input type="checkbox"/> Yes	<input type="checkbox"/> No	<input type="checkbox"/> Yes	<input type="checkbox"/> No	<input type="checkbox"/> Yes	<input type="checkbox"/> No	# Yes	# Observed
ESP1.	PPE including gloves and gowns are available and located near point of use.	<input type="checkbox"/> Yes	<input type="checkbox"/> No	<input type="checkbox"/> Yes	<input type="checkbox"/> No	<input type="checkbox"/> Yes	<input type="checkbox"/> No	<input type="checkbox"/> Yes	<input type="checkbox"/> No		
ESP2.	6 Moment/ESP sign is clear and visible. Sample signage is available at <a href="https://www.cdph.ca.gov/Programs/CHCQ/HAI/Pages/ESP.aspx">CDPH website</a> : (https://www.cdph.ca.gov/Programs/CHCQ/HAI/Pages/ESP.aspx)	<input type="checkbox"/> Yes	<input type="checkbox"/> No	<input type="checkbox"/> Yes	<input type="checkbox"/> No	<input type="checkbox"/> Yes	<input type="checkbox"/> No	<input type="checkbox"/> Yes	<input type="checkbox"/> No		
ESP3.	If a private room is not available, resident is <u>cohorted</u> with a compatible roommate (such as a resident with the same MDRO or resistance mechanism, if present and known).	<input type="checkbox"/> Yes	<input type="checkbox"/> No	<input type="checkbox"/> Yes	<input type="checkbox"/> No	<input type="checkbox"/> Yes	<input type="checkbox"/> No	<input type="checkbox"/> Yes	<input type="checkbox"/> No		
ESP4.	If multi-bed room, each resident's bed space is treated as a separate room (e.g., care provider performs hand hygiene and changes PPE between caring for each resident in the room).	<input type="checkbox"/> Yes	<input type="checkbox"/> No	<input type="checkbox"/> Yes	<input type="checkbox"/> No	<input type="checkbox"/> Yes	<input type="checkbox"/> No	<input type="checkbox"/> Yes	<input type="checkbox"/> No		
ESP5.	Hand hygiene is performed before entering the resident care environment.	<input type="checkbox"/> Yes	<input type="checkbox"/> No	<input type="checkbox"/> Yes	<input type="checkbox"/> No	<input type="checkbox"/> Yes	<input type="checkbox"/> No	<input type="checkbox"/> Yes	<input type="checkbox"/> No		
ESP6.	Gloves, <u>gown</u> and other necessary PPE are donned before performing high-contact tasks (6 moments).	<input type="checkbox"/> Yes	<input type="checkbox"/> No	<input type="checkbox"/> Yes	<input type="checkbox"/> No	<input type="checkbox"/> Yes	<input type="checkbox"/> No	<input type="checkbox"/> Yes	<input type="checkbox"/> No		
ESP7.	Hand hygiene is performed after PPE is removed, before leaving the resident care environment.	<input type="checkbox"/> Yes	<input type="checkbox"/> No	<input type="checkbox"/> Yes	<input type="checkbox"/> No	<input type="checkbox"/> Yes	<input type="checkbox"/> No	<input type="checkbox"/> Yes	<input type="checkbox"/> No		
ESP8.	Dedicated or disposable noncritical patient-care equipment (e.g., blood pressure cuffs) is used; if dedicated/disposable equipment is unavailable, then equipment is cleaned and disinfected prior to use on another resident according to manufacturers' instructions.	<input type="checkbox"/> Yes	<input type="checkbox"/> No	<input type="checkbox"/> Yes	<input type="checkbox"/> No	<input type="checkbox"/> Yes	<input type="checkbox"/> No	<input type="checkbox"/> Yes	<input type="checkbox"/> No		

# of Correct Practices Observed ("# Yes"): \_\_\_\_\_ Total # ESP Observations ("# Observed"): \_\_\_\_\_ Adherence: \_\_\_\_\_%

\_\_\_\_\_ (Up to 32 total) (Total "# Yes" ÷ Total "# Observed" x 100)

*If practice could not be observed (i.e. cell is blank), do not count in total # Observed.*





Healthcare-Associated Infections Program Adherence Monitoring  
Enhanced Standard Precautions (ESP)

Assessment completed by:  
Date:  
Unit:

Regular monitoring with feedback of results to staff can maintain or improve adherence to ESP practices. Use this tool to identify gaps and opportunities for improvement. Monitoring may be performed in any type of resident care location where residents are on ESP. Refer to the grid at the back of this tool to determine if ESP is indicated for the resident.

**Instructions:** Observe 3-4 residents on ESP. Observe each practice and check a box if adherent, Yes or No. In the column on the right, record the total number of "Yes" for adherent practices observed and the total number of observations ("Yes" + "No"). Calculate adherence percentage in the last row.

Enhanced Standard Precautions Practices		ESP Resident 1		ESP Resident 2		ESP Resident 3		ESP Resident 4		Adherence by Task	
		<input checked="" type="checkbox"/> Yes <input type="checkbox"/> No	<input type="checkbox"/> Yes <input checked="" type="checkbox"/> No	<input type="checkbox"/> Yes <input checked="" type="checkbox"/> No	<input type="checkbox"/> Yes <input type="checkbox"/> No	<input type="checkbox"/> Yes <input type="checkbox"/> No	<input type="checkbox"/> Yes <input type="checkbox"/> No	<input type="checkbox"/> Yes <input type="checkbox"/> No	# Yes	# Observed	
ESP1.	PPE including gloves and gowns are available and located near point of use.	<input checked="" type="checkbox"/> Yes <input type="checkbox"/> No	<input type="checkbox"/> Yes <input checked="" type="checkbox"/> No	<input type="checkbox"/> Yes <input type="checkbox"/> No	<input type="checkbox"/> Yes <input type="checkbox"/> No	<input type="checkbox"/> Yes <input type="checkbox"/> No	<input type="checkbox"/> Yes <input type="checkbox"/> No	<input type="checkbox"/> Yes <input type="checkbox"/> No	<input type="checkbox"/> Yes <input type="checkbox"/> No	1	2
ESP2.	6 Moment/ESP sign is clear and visible. Sample signage is available at <a href="https://www.cdph.ca.gov/Programs/CHCQ/HAI/Pages/ESP.aspx">CDPH website:</a> (https://www.cdph.ca.gov/Programs/CHCQ/HAI/Pages/ESP.aspx)	<input type="checkbox"/> Yes <input checked="" type="checkbox"/> No	<input checked="" type="checkbox"/> Yes <input type="checkbox"/> No	<input type="checkbox"/> Yes <input type="checkbox"/> No	<input type="checkbox"/> Yes <input type="checkbox"/> No	<input type="checkbox"/> Yes <input type="checkbox"/> No	<input type="checkbox"/> Yes <input type="checkbox"/> No	<input type="checkbox"/> Yes <input type="checkbox"/> No	<input type="checkbox"/> Yes <input type="checkbox"/> No	1	2
ESP3.	If a private room is not available, resident is <u>cohorted</u> with a compatible roommate (such as a resident with the same MDRO or resistance mechanism, if present and known).	<input checked="" type="checkbox"/> Yes <input type="checkbox"/> No	<input type="checkbox"/> Yes <input type="checkbox"/> No	<input type="checkbox"/> Yes <input type="checkbox"/> No	<input type="checkbox"/> Yes <input type="checkbox"/> No	<input type="checkbox"/> Yes <input type="checkbox"/> No	<input type="checkbox"/> Yes <input type="checkbox"/> No	<input type="checkbox"/> Yes <input type="checkbox"/> No	<input type="checkbox"/> Yes <input type="checkbox"/> No	1	1
ESP4.	If multi-bed room, each resident's bed space is treated as a separate room (e.g., care provider performs hand hygiene and changes PPE between caring for each resident in the room).	<input checked="" type="checkbox"/> Yes <input type="checkbox"/> No	<input type="checkbox"/> Yes <input checked="" type="checkbox"/> No	<input type="checkbox"/> Yes <input type="checkbox"/> No	<input type="checkbox"/> Yes <input type="checkbox"/> No	<input type="checkbox"/> Yes <input type="checkbox"/> No	<input type="checkbox"/> Yes <input type="checkbox"/> No	<input type="checkbox"/> Yes <input type="checkbox"/> No	<input type="checkbox"/> Yes <input type="checkbox"/> No	1	2
ESP5.	Hand hygiene is performed before entering the resident care environment.	<input type="checkbox"/> Yes <input checked="" type="checkbox"/> No	<input type="checkbox"/> Yes <input checked="" type="checkbox"/> No	<input type="checkbox"/> Yes <input type="checkbox"/> No	<input type="checkbox"/> Yes <input type="checkbox"/> No	<input type="checkbox"/> Yes <input type="checkbox"/> No	<input type="checkbox"/> Yes <input type="checkbox"/> No	<input type="checkbox"/> Yes <input type="checkbox"/> No	<input type="checkbox"/> Yes <input type="checkbox"/> No	0	2
ESP6.	Gloves, gown and other necessary PPE are donned before performing high-contact tasks (6 moments).	<input checked="" type="checkbox"/> Yes <input type="checkbox"/> No	<input checked="" type="checkbox"/> Yes <input type="checkbox"/> No	<input type="checkbox"/> Yes <input type="checkbox"/> No	<input type="checkbox"/> Yes <input type="checkbox"/> No	<input type="checkbox"/> Yes <input type="checkbox"/> No	<input type="checkbox"/> Yes <input type="checkbox"/> No	<input type="checkbox"/> Yes <input type="checkbox"/> No	<input type="checkbox"/> Yes <input type="checkbox"/> No	2	2
ESP7.	Hand hygiene is performed after PPE is removed, before leaving the resident care environment.	<input type="checkbox"/> Yes <input checked="" type="checkbox"/> No	<input checked="" type="checkbox"/> Yes <input type="checkbox"/> No	<input type="checkbox"/> Yes <input type="checkbox"/> No	<input type="checkbox"/> Yes <input type="checkbox"/> No	<input type="checkbox"/> Yes <input type="checkbox"/> No	<input type="checkbox"/> Yes <input type="checkbox"/> No	<input type="checkbox"/> Yes <input type="checkbox"/> No	<input type="checkbox"/> Yes <input type="checkbox"/> No	1	2
ESP8.	Dedicated or disposable noncritical patient-care equipment (e.g., blood pressure cuffs) is used; if dedicated/disposable equipment is unavailable, then equipment is cleaned and disinfected prior to use on another resident according to manufacturers' instructions.	<input checked="" type="checkbox"/> Yes <input type="checkbox"/> No	<input checked="" type="checkbox"/> Yes <input type="checkbox"/> No	<input type="checkbox"/> Yes <input type="checkbox"/> No	<input type="checkbox"/> Yes <input type="checkbox"/> No	<input type="checkbox"/> Yes <input type="checkbox"/> No	<input type="checkbox"/> Yes <input type="checkbox"/> No	<input type="checkbox"/> Yes <input type="checkbox"/> No	<input type="checkbox"/> Yes <input type="checkbox"/> No	2	2
# of Correct Practices Observed ("# Yes"): <b>9</b>		Total # ESP Observations ("# Observed"): <b>15</b> (Up to 32 total) <i>If practice could not be observed (i.e. cell is blank), do not count in total # Observed.</i>				Adherence: <b>60</b> % (Total "# Yes" ÷ Total "# Observed" x 100)					



## Sustaining ESP Practices and Providing Ongoing Training

- Provide ongoing training (e.g., use slideset)
- Review and recognize when your staff need training or re-training in ESP (e.g., review adherence monitoring for gaps)
- Incorporate ESP practices in your facility culture
- Use standard signage (e.g., “6” sign)
- Involve residents and families in resident care
- Continually celebrate (any size) success

## Poll Question #3

*After today's workshop, do you feel ready to provide training to your staff on ESP principles? Select the best response.*

- A. Yes, I can start now!
- B. Yes, but I need more time to prepare
- C. Yes, but I need to review ESP concepts
- D. No, but I'm thinking about it
- E. This is not for me

---

---

## QUESTIONS AND DISCUSSION

---

---



## Save the Dates

- Join us for **ESP Office Hours** on Friday, May 26, 2023, 11-12PM
- Attend **train-the-trainer workshops**:
  - UTI Prevention: June 20-23, 2023
  - IPC Training for CNA: July 17-21, 2023
  - IPC Training for EVS Staff: August 21-25, 2023
- Register for workshops and office hours, and access resources:**  
<https://www.hsag.com/ip-train-the-trainer>



Thank you for attending!

Please complete this 4-question survey:

<https://www.surveymonkey.com/r/ESP23workshopeval>

We appreciate your feedback.

**Questions?**

Project Inbox

[nursinghomes@hsag.com](mailto:nursinghomes@hsag.com)